



PRODUCTS & MATERIALS GUIDE
DECORATIVE
CONCRETE

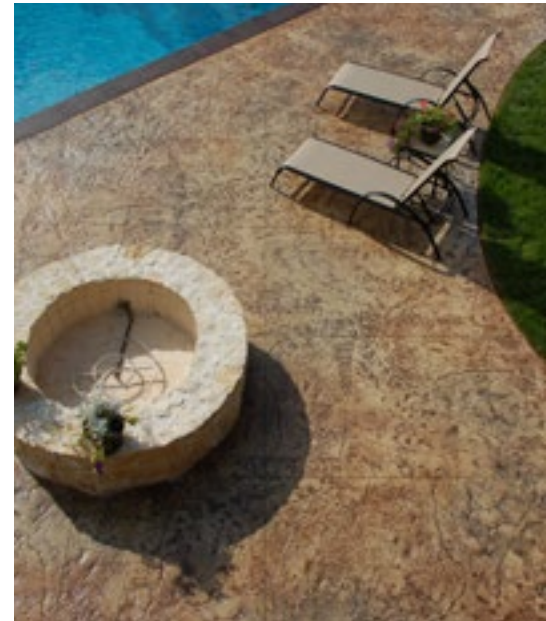


EUCLID CHEMICAL

DECORATIVE CONCRETE

PRODUCTS & MATERIALS GUIDE

Euclid Chemical	1	Stamping Accessories	
Product Systems		Border Tools.....	22
Cast-in-place	2	Edge Forms	22
Overlays & Toppings.....	4	Texture Wheels.....	23
High Performance Flooring	6	Stair Riser	23
Stains & Dyes	7	Detectable Warning Systems.....	23
Products		Vertical Tools	24
Concrete Colorants, Releases, and Finishing	8	Urethane Rubber Formliners	25
Concrete Overlays.....	9	Color Selections	26
Concrete Curing & Sealing.....	10	Custom Capabilities	29
Polymer Floor Coatings.....	11	Training Seminars	29
Platform Tools			
Brick.....	12		
Slate.....	13		
Granite	16		
Stone	18		
WoodPlank	20		
Seamless Texture Skins.....	21		



EUCLID CHEMICAL



EUCLID CHEMICAL

PROVEN. CONCRETE. SOLUTIONS.

The Euclid Chemical Company, based in Cleveland, Ohio, is a leading manufacturer of products for the concrete and masonry construction industry. Since 1910, Euclid Chemical has maintained strong relationships with contractors, specifiers, owners, building materials suppliers and concrete producers by providing quality products backed by ISO 9001 certification and industry leading service and support. Euclid Chemical's comprehensive product offering includes admixtures, fiber reinforcement, repair mortars, grouts, adhesives, concrete curing and sealing materials, joint fillers, liquid densifiers, and waterproofing systems.

Euclid Chemical's Increte decorative products provide a full range of professional-grade concrete materials and tools for producing architectural decorative concrete. Originally founded in 1963 as Increte Systems, Inc. and acquired by Euclid Chemical in 2008, the Increte brand has grown from a regional line of products to worldwide availability through Euclid's strong distribution network, design and installation consultation services, and commitment to customer support. With value and performance in mind, contractors, architects, and builders count on attractive and consistent results with Increte decorative products.



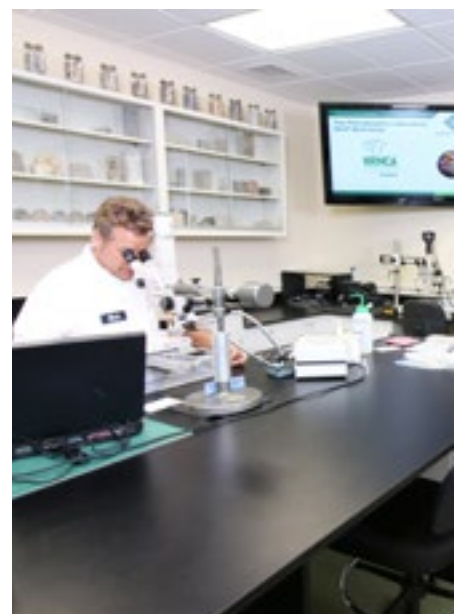
A SYSTEMS APPROACH

The Increte line includes solutions for integral concrete coloring, classic stamped concrete systems, concrete texturing and resurfacing, stains and dyes, polishable overlays, decorative coatings and sealers, as well as formliners and tools for vertical decorative concrete. Increte product systems bridge the gap between functionality and aesthetics to achieve both performance goals and design intent for new construction and renovation in commercial and residential construction, restaurant and hospitality projects, educational facilities, retail, theme parks, green spaces and more. Using a systems approach to decorative concrete projects, the Increte line provides sustainable, LEED compliant and cost-effective solutions to meet today's decorative concrete design and construction challenges.

INDUSTRY-LEADING SUPPORT

Euclid Chemical provides in-house support services to the decorative concrete community including petrographic analysis, live and virtual continuing education seminars, and consultation services for contractors, architects, engineers and owners. Throughout the year, Euclid hosts decorative concrete training seminars to help concrete professionals of all skill levels develop and learn. Euclid also provides front-line technical support representatives who are ready and able by phone or email to answer questions, assist with product selection and use, and troubleshoot issues.

- Over 120 experienced field sales and service representatives in North America
- Field team supported by dedicated product managers and field technical specialists
- Product & technology training programs
- Seminars featuring AIA certified programs
- Specification review & update service
- Design & installation consultation/professional engineering staff
- Real-time technical support on products and applications



PRODUCT SYSTEMS

CAST-IN-PLACE



COLOR-CRETE

INTEGRAL COLOR SYSTEM

Color-Crete is a concentrated color admixture, available in powder, granular, or liquid form. Color-Crete is designed to be used in all cementitious materials, producing a wide variety of color. Color-Crete is a mix-in, integral colorant and not a topping, which means the color is permanent for the life of the concrete. Stamped, broomed, troweled, sand-blasted and exposed aggregate are several finishing techniques that can transform the look of Color-Crete concrete. With 35 standard colors and an unlimited palette of custom colors available, Color-Crete is the decorative product of choice for flatwork, vertical pours and pre-cast applications.

COLOR-CRETE POWDER

Color-Crete Powder synthetic iron oxide pigments are packaged in repulpable bags for ease of use and cleanliness.

COLOR-CRETE LIQUID

Color-Crete Liquid pigments are specially-blended, inorganic pigments dispersed in water and are designed for use with Color-Matic integral-color-dispensing machines.

COLOR-CRETE GRANULAR

Color-Crete Granular pigments are synthetic iron oxide pigments in granule form for easy flow and low dusting. For use in Color-Matic bulk dispensers only.

COLOR-CRETE 7/28

Color-Crete 7/28 is a pre-packaged concentrated color admixture available in 7 standard pigments that can produce 28 different shades by varying the number of bags per cubic yard (cubic meter) of concrete.

See Color-Crete and Color Crete 7/28 Color Charts (pg. 26)

COLOR-MATIC

GRANULAR INTEGRAL COLOR DISPENSERS

Euclid Chemical's state-of-the-art Color-Matic dispensers are integral concrete pigment dispensing systems trusted by industry professionals throughout the world to provide "Color on Demand" to the ready-mix and precast concrete industry. The Color-Matic systems use the latest technologies to produce computerized batching in ready-mix, precast and supply houses and are the most accurate in the industry. Each color dispenser machine offers a solution for every user; from 1 yard to 10 yards using granular colors. The Color-Matic Systems can produce all Euclid Chemical's standard integral colors using just 4 primary base colors. Combined with Euclid Chemical's color matching capability, these systems can also produce all competitive integral colors and are preloaded with close to 1,000 competitive colors from all major brands.





STAMPED CONCRETE

PATTERNED SYSTEM

The Increte brand stamped concrete system replicates natural textures at a fraction of the cost. Over 100 nature-inspired patterns and custom stamps are available.

See **Stamping Tools** (starting at pg. 12)

THE SYSTEM

Color-Crete Integral Color or Color Hardener	Clear Seal
Antique Release or Liquid Release	EucoBar
Stamping Tools	Shur-Grip
	Matte Add



STONE-CRETE

ARCHITECTURAL FORMLINER SYSTEM

Stone-Crete architectural-wall systems are cast-in-place and deliver the beauty of stone with the strength and versatility of concrete. With quick installation, the Stone-Crete system is cost-effective compared to natural materials, and unlike veneers there is never the possibility of delamination. Stone-Crete is an ideal choice for all decorative vertical concrete.

See **Color-Crete Color Chart** (pg. 26)

THE SYSTEM

Formliners	Stain-Crete Acid Stain or Stone Essence
Formshield WB	Clear Seal
Color-Crete Integral Color	



EZ-EXPOSE

CONCRETE SURFACE RETARDER

EZ Expose is water-based concrete surface retarder used to create an exposed aggregate finish on freshly poured concrete. EZ Expose is available in 4 grades providing finishes from a sandblast etch up to 1 in (2.54 cm) depth for large decorative stone exposure.

THE SYSTEM

Color-Crete Integral Color
EZ-Expose Surface Retarder
Clear Seal or Browntone



EZ Expose 5 EZ Expose 25 EZ Expose 100 EZ Expose 200

OVERLAYS & TOPPING



THIN-CRETE

Stamped Overlay System

Thin-Crete overlays duplicate the grandeur of nature at a fraction of the cost without the mess or expense of removing structurally sound concrete. Thin-Crete adds value to both interior and exterior spaces.

See Increte Standard Color Chart (pg. 27)

THE SYSTEM

- | | |
|--------------------|-----------------|
| Tammsweld | Antiquing Agent |
| Thin-Crete Grout | Clear Seal |
| Increte Color Pack | Shur-Grip |
| Liquid Release | |



TEXTURE-CRETE

Patterned Overlay System

Texture-Crete overlays create a textured, patterned surface without the expense of removing and replacing structurally sound concrete. Once sealed, Texture-Crete is protected and easy to maintain.

See Increte Standard Color Chart (pg. 27)

THE SYSTEM

- | | |
|------------------|---------------------------|
| Tammsweld | Increte Color Pack |
| Spray-Deck Grout | Increte Clear Seal |
| Spray-Deck Resin | Stencil or strapping tape |



SPRAY DECK

Textured Overlay System

Spray-Deck is a spray-on overlayment that is durable and easy to maintain and has the look of brand new concrete. At 6000 psi (41 MPa), Spray-Deck is resistant to abrasion and perfect for high traffic areas where a decorative finish is desired.

See Increte Standard Color Chart (pg. 27)

THE SYSTEM

- | | | |
|-----------------------------------|----|-----------------------|
| Spray-Deck Single-Component Grout | OR | Spray Deck Grout |
| Concrete Stain Sealer | | Spray-Deck Resin |
| | | Concrete Stain Sealer |



LEVEL TOP PC-AGG

Polishable Self-Leveling Overlayment with Natural Aggregate

Level Top PC-AGG is an easy-to-use, self-leveling resurfacing compound with graded natural aggregate for a “salt and pepper” look. It is designed for use on either new or worn concrete substrates. Level Top PC-AGG can be ground and polished to achieve the appearance of polished concrete. The high early strength allows polishing within 24 hours of placement. Level Top PC-AGG is premixed or can be colored using Level Top Color Packs.

See Level Top Color Packs Color Chart (pg. 27)

THE SYSTEM

Eucofloor Epoxy Primer or Dural
Aquatight 100 Plus
Level Top PC-AGG

Ultrasil Li+ or
Euco Diamond Hard
Ultraguard
Urethane Water-Based



LEVEL TOP POLISH

Polishable Self-Leveling Overlayment

Level Top Polish is an easy-to-use, self-leveling resurfacing compound, designed for use on either new or worn concrete substrates. Level Top Polish provides excellent adhesion, toughness, and long-term durability. Level Top Polish can be ground and polished to achieve a high gloss finish. The high early strength allows polishing within 24 hours of placement. Level Top Polish is premixed or can be colored using Level Top Color Packs.

See Level Top Color Packs Color Chart (pg. 27)

THE SYSTEM

Eucofloor Epoxy Primer or Dural
Aquatight 100 Plus
Level Top Polish

Ultrasil Li+ or
Euco Diamond Hard
Ultraguard
Urethane Water-Based



LEVEL TOP STAIN

Stainable Self-Leveling Overlayment

Level Top Stain is an easy-to-use, self-leveling resurfacing compound, designed for use on either new or worn concrete substrates. Level Top Stain’s acrylic polymer modification provides excellent adhesion, toughness, and long-term durability. Level Top Stain can be integrally colored, dyed, stained, and epoxy coated for a decorative finish.

THE SYSTEM

Eucofild 2.0 or Eucofloor Epoxy
Primer or Dural Aquatight 100
Plus
Level Top Stain

Stain Crete or Vibra Stain
(Optional)
High Performance Epoxy or
Clear Seal
Urethane Water-Based

HIGH PERFORMANCE FLOORING



METAL FX

METALLIC-EFFECT PIGMENTS FOR EPOXY

Metal FX is an indoor, epoxy flooring system that can be customized to produce unique, metallic look, light-reflective floors. Metal FX pigments are colored blends of nanoparticle pigments that are pre-measured.

See Metal FX Color Selection (pg. 28)

THE SYSTEM

Metal FX
High Performance Epoxy
Urethane (WB or SB)
High Gloss Wax



GRANITE COAT

VINYL FLAKE COATING

Granite Coat is an attractive, seamless flooring system that is chemical and abrasion resistant. Utilizing a clear, 100% solids epoxy with a blend of colored vinyl chips, Granite Coat provides positive footing or a smooth, high-gloss appearance.

See Granite Coat Color Selection (pg. 28)

THE SYSTEM

Granite Coat
High Performance Epoxy
Urethane (WB or SB)



CHROMA-QUARTZ

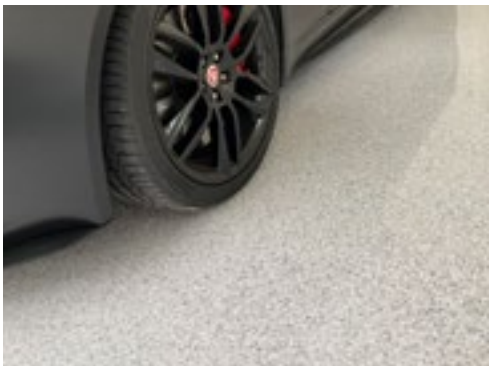
PIGMENTED QUARTZ FOR RESIN FLOORING SYSTEM

Chroma-Quartz consists of quality quartz aggregate pigmented with a high performance surface coating and iron oxide pigments. Chroma-Quartz is designed to be used in resin broadcast and trowel applications.

See Chroma-Quartz Color Selection (pg. 28)

THE SYSTEM

Eucopoxy Tufcoat DBS
Chroma-Quartz
High Performance Epoxy



GEMSTONE ELEGANCE

SELF-LEVELING, SEAMLESS DECORATIVE EPOXY FLOORING

GemStone Elegance uses a proprietary blend of polymer and specialty aggregates added to a 100% solids abrasion and chemical resistant binder that results in gorgeous seamless floor perfect for most commercial, residential, education, and office applications.

See GemStone Elegance Color Selection (pg. 28)

THE SYSTEM

DuraPrime WB
GemStone Elegance
Aggregate
High Performance Epoxy
Urethane (WB or SB)

STAINS & DYES

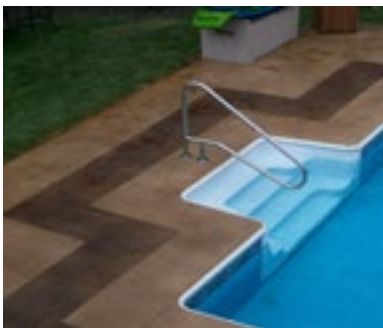


CONCRETE STAIN SEALER

ACRYLIC CONCRETE STAIN AND SEALER

Concrete Stain Sealer is a pigmented, acrylic sealer designed specifically for concrete and other cementitious and decorative surfaces. Concrete Stain Sealer is non-yellowing, resistant to UV light, and leaves the surface water and stain resistant. Concrete Stain Sealer is available in solvent-based, water-based, and low-VOC solvent-based.

See Increte Standard Color Chart (pg. 27)



STONE ESSENCE

SEMI-TRANSPARENT STAIN FOR CONCRETE

Stone Essence is a concentrated, water-based coloring system composed of UV stable, semi-transparent, iron-oxide pigments that when applied results in a semi-transparent, natural looking, variegated and marbled concrete surface. Stone Essence is not a sealer, but surfaces colored with Stone Essence can be sealed with either solvent or water-based sealers. Stone Essence is an alternative to acid stained concrete.

See Stone Essence Color Selection (pg. 28)

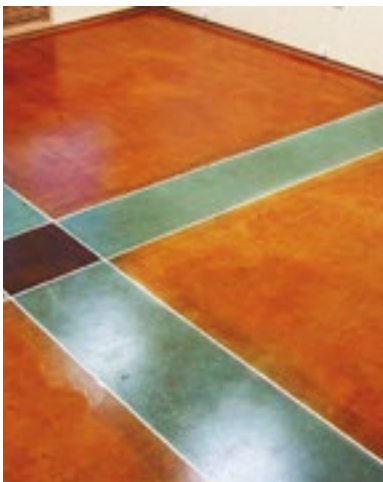


STAIN-CRETE

ACID-BASED CHEMICAL STAIN FOR CONCRETE

Stain-Crete is a penetrating, acid-based stain used to color old or new concrete. Stain-Crete reacts chemically with cured concrete to provide a translucent, permanent color with a subtly shaded marbled effect, similar to the aged appearance of natural stone. Stain-Crete's rich variegated finish will not peel, crack, chip, or fade from UV light. Stain-Crete can also be used in conjunction with overlays, such as Level Top Stain, Thin-Crete, Spray-Deck, or ReCover.

See Stain-Crete Color Selection (pg. 27)



VIBRA-STAIN SB

ACETONE-SOLUBLE DYE FOR CONCRETE

Vibra-Stain SB dyes are manufactured from blends of concentrated powdered-metallic dyes and are formulated for dilution with acetone. Vibra-Stain SB is designed for use on concrete that will be polished with liquid hardeners.

VIBRA-STAIN

WATER-SOLUBLE DYE FOR CONCRETE

Vibra-Stain is a unique blended solution of dyes that create vibrant, semi-transparent color for concrete surfaces. Vibra-Stain is a concentrate that can be diluted with either alcohol or water and is appropriate for interior use.

See Vibra-Stain/Vibra-Stain SB Color Selection (pg. 28)

CONCRETE COLORANTS, RELEASES, AND FINISHING

CONCRETE COLOR

Color-Crete Granular

Available in bulk to be used Color-Matic G

Synthetic iron oxide pigments in granule form designed to be used in all cementitious materials, producing a wide variety of color effects.

* See Color-Crete Color Chart on pg. 26 for 3-digit color codes

Color-Crete Powder

CCCB P001 * 1 lb (0.9 kg) bag

CCCB P005 * 5 lb (2.2 kg) bag

CCCB P025 * 25 lb (11.3 kg) Bag

Concentrated color admixture designed to be used in all cementitious materials, producing a wide variety of color effects.

* See Color-Crete Color Chart on pg. 26 for 3-digit color codes

Color-Crete Liquid

CCCL Y001 * 1 yard (0.9m)

Also available in bulk totes

Concentrated water-based, ready-to-use, pigmented slurry comprised of premixed liquid components and Color-Crete Powder.

* See Color-Crete Color Chart on pg. 26 for 3-digit color codes

Color-Crete 7 for 28

CCCS P006 * 6 lb (2.7 kg) Bag

Concentrated color admixture available in 7 standard pigments that can produce 28 different shades by varying the number of bags per cubic yard (cubic meter) of concrete.

* See Color-Crete 7/28 Color Chart on pg. 26 for 3-digit color codes

Carbon Black Liquid Integral Color

CLPT P045 998 45 lb (20.4 kg) Pail

Specially-blended dispersion of carbon black pigments for use in all cementitious materials.

Color-Crete Mortar Colors

CCCM P002 * 2 lb (0.9 kg) bag

Concentrated color admixture specially formulated for use with cementitious grouts and mortars.

* See Color-Crete Color Chart on pg. 26 for 3-digit color codes

Color Hardener

CCHA P060 * 60 lb (27.2 kg) Pail

Ready-to-use, colored dry shake surface hardener for coloring and hardening freshly poured concrete.

* See Increte Standard Color Chart on pg. 27 for 3-digit color codes

Antiquing Agent

CAAG P005 * 5 lb (2.26 kg) Unit

Colorant composed of specially blended iron-oxide pigments to add highlights to imprinted or stamped concrete and overlays.

* See Increte Standard Color Chart on pg. 27 for 3-digit color codes

Level Top Color Packs

CTCP P001 * 1 lb (0.45 kg) bag

CTCP P002 * 2 lb (0.9 kg) bag

Powdered pigment to be used with Level Top Self-Leveling Overlay Systems.

* See Level Top Color Packs Color Chart on pg. 27 for 3-digit color codes

Increte Color Packs

CTCP P001 * 1 lb (0.45kg) Bag

Pre-measured, integral colorant packages designed for use with all cementitious grouts including Thin-Crete and Spray Deck.

* See Increte Standard Color Chart on pg. 27 for 3-digit color codes

RELEASE AGENTS

Color Release

CCRE P020 * 20 lb (9.1 kg) Pail

Specially-formulated light density releasing agent containing iron-oxide pigments that add color and depth to the stamped surface.

* See Increte Standard Color Chart on pg. 27 for 3-digit color codes

Liquid Release

CLRB G001 000 1 gal (3.8 L) Unit

CLRB G005 000 5 gal (18.9 L) Unit

Clear liquid release agent designed for use anywhere powdered release agents are impractical to use.

Antique Release

CARE P035 * 35 lb (15.8 kg) Pail

Specially-formulated releasing agent containing iron-oxide pigments that add a secondary color, or antiquing color and depth to the stamped surface.

* See Increte Standard Color Chart on pg. 27 for 3-digit color codes

STAINS AND DYES

Stain-Crete

CSCR G001 * 1 gal (3.8 L) Unit

Penetrating, reactive acid-based stain used to color old or new concrete.

* See Stain-Crete Chart on pg. 27 for 3-digit color codes

Stone Essence

CSES O032 * 1 qt (0.9 L) Unit (concentrated)

Concentrated, water-based coloring system composed of UV stable, semi-transparent, iron-oxide pigments that.

* See Stone Essence Color Chart on pg. 28 for 3-digit color codes

Vibra-Stain

CVSC O008 * 8 oz (236 mL) Bottle

Blended solution of water-soluble dyes that create vibrant, semi-transparent color for concrete surfaces.

* See Vibra-Stain/Vibra-Stain SB Color Chart on pg. 28 for 3-digit color codes

Vibra-Stain SB

CVSP O008 * 8 oz (236 mL) Bottle

Blends of concentrated powdered dyes formulated for dilution with acetone.

* See Vibra-Stain/Vibra-Stain SB Color Chart on pg. 28 for 3-digit color codes

Concrete Stain Sealer Solvent-Based

CSSS G001 * 1 gal (3.8 L) Can

CSSS G005 * 5 gal (18.9 L) Pail

Pigmented, solvent-based acrylic concrete stain and sealer.

* See Increte Standard Color Chart on pg. 27 for 3-digit color codes
For clear, tintable base use color code 000

Concrete Stain Sealer Water-Based

CSSW G001 * 1 gal (3.8 L) Can

CSSW G005 * 5 gal (18.9 L) Pail

Pigmented, water-based acrylic latex concrete stain and sealer.

* See Increte Standard Color Chart on pg. 27 for 3-digit color codes
For clear, tintable base use color code 000

Concrete Stain Sealer VOC

CSSV G001 * 1 gal (3.8 L) Can

CSSV G005 * 5 gal (18.9 L) Pail

Pigmented, low-VOC, solvent-based, acrylic concrete stain and sealer.

* See Increte Standard Color Chart on pg. 27 for 3-digit color codes

For clear, tintable base use color code 000

CONCRETE FINISHING EFFECTS & AIDS

EZ Expose

CSUC G001 000 Grade 5: 1 gal (3.8 L) Unit

CSUC G005 000 Grade 5: 5 gal (18.9 L) Unit

CSUF G001 000 Grade 25: 1 gal (3.8 L) Unit

CSUF G005 000 Grade 25: 5 gal (18.9 L) Unit

CSUK G001 000 Grade 100: 1 gal (3.8 L) Unit

CSUK G005 000 Grade 100: 5 gal (18.9 L) Unit

CSUT G001 000 Grade 200: 1 gal (3.8 L) Unit

CSUT G005 000 Grade 200: 5 gal (18.9 L) Unit

Water-based concrete surface retarder used to create an exposed aggregate finish on freshly-poured concrete.

EucoBar

028 95 1 gal (3.8 L) Jug

028 05 5 gal (18.9 L) Pail

028 55 55 gal (208 L) Drum

Concentrated evaporation retardant and finishing aid, holds in surface moisture, helps prevent plastic shrinkage cracking.

Cement Retarder

CCRT G001 000 1 gal (3.8 L) Container

CCRT G001 000 5 gal (18.9 L) Container

Easy-to-use, water-based additive that prolongs the setting time for cement-based products, including concrete and cementitious overlays.

CONCRETE OVERLAYS

SELF-LEVELING OVERLAYS

Level Top PC-AGG

407A 50 Gray: 50 lb (22.7 kg) Bag

407W3 50 White: 50 lb (22.7 kg) Bag

407§50 Colors: 50 lb (22.7 kg) Bag

Polishable self-leveling overlayment with natural aggregate.

Level Top Polish

CLHS P050 355 50 lb (22.7 kg) Bag

CLHS P050§ Colors: 50 lb (22.7 kg) Bag

Polishable self-leveling overlayment.

Level Top Stain

CLTO P050 355 50 lb (22.7 kg) Bag

Self-leveling re-surfacing compound that can be integrally colored, stained or dyed.

STAMPABLE OVERLAYS

Thin-Crete Grout

CTCG P050 * 50 lb (22.7 kg) Bag

Stampable single-component, polymer-modified, cementitious overlay.

* See Increte Standard Color Chart on pg. 27 for 3-digit color codes

For tintable base use color code 000

SPRAYABLE OVERLAYS

Spray-Deck/Texture-Crete Grout

CSDG P050 355 Gray: 50 lb (22.7 kg) Bag

CSDG P050 970 White: 50 lb (22.7 kg) Bag

A two-component, polymer modified cementitious grout that is mixed with Spray Deck Resin to produce a textured finish.

Spray-Deck Single Component Grout

CSCG P050 355 Gray: 50 lb (22.7 kg) Bag

CSCG P050 970 White: 50 lb (22.7 kg) Bag

CSCF P050 970 White (Fine): 50 lb (22.7 kg) Bag

Pre-blended cementitious coating uniquely formulated with fine aggregate that produces a textured finish.

Spray-Deck Resin

CSDR G001 000 1 gal (3.8 L) Unit

CSDR G005 000 5 gal (18.9 L) Unit

Specially-formulated acrylic that modifies cementitious materials, including overlayments and masonry, specifically engineered for use with Spray Deck Grout.

Renovate

CREK P025 970 25 lb (11.3 kg) Kit

Two-component, polymer-modified cementitious coating used to resurface concrete.

TROWEL-APPLIED OVERLAYS

Euco Re-Cover

150R 40 Gray: 40 lb (18 kg) Bag

CMIC P040 970 White: 40 lb (18 kg) Bag

Polymer modified, fiber-reinforced concrete resurfacing mortar.

OVERLAY BONDING AGENTS

Tammsweld

THHWJ01 6/1 gal (3.8 L) Jugs

THHWPO5 5 gal (18.9 L) Pail

Rewettable liquid bonding agent and polymer modifier for concrete and cement mortars.

Eucoweld 2.0

L6202 95 6/1 gal (3.8 L) Jugs

L6202 05 5 gal (18.9 L) Pail

Liquid latex bonding agent for cement-based repairs and toppings.

High Performance Epoxy Primer Express

CEPE G003 000 3 gal (11.4 L) Kit

Rapid turnaround epoxy primer for Level Top overlay systems.

CONCRETE CURING & SEALING

TOPICAL SEALERS

Clear Seal

CCSS G001 000 1 gal (3.8 L) Can

CCSS G005 000 5 gal (18.9 L) Pail

CCSS G055 000 55 gal (207.9 L) Drum

Clear concrete cure & seal formulated with pure acrylic resins that is non-yellowing and is highly recommended for exterior use.

Clear Seal 100

CCSO G005 000 5 gal (18.9 L) Pail

Low-VOC, solvent-based, concrete cure & seal formulated with exempt solvents and acrylic resins.

Clear Seal Natural

CCSN G001 000 1 gal (3.8 L) Can

CCSN G005 000 5 gal (18.9 L) Pail

Ready-to-use, water-based, silicone water repellent sealer that preserves the natural look of the surface without adding gloss, but nicely enhances the color of the substrate.

Clear Seal Water-Based

CCSW G001 000 1 gal (3.8 L) Can

CCSW G005 000 5 gal (18.9 L) Pail

CCSW G055 000 55 gal (207.9 L) Drum

Non-yellowing, clear sealer that provides a quality cure to freshly-placed interior or exterior concrete that helps control hydration of cement by preventing rapid loss of moisture.

Crystal Clear VOC

CCCV G001 000 1 gal (3.8 L) Can

CCCV G005 000 5 gal (18.9 L) Pail

CCCV G055 000 55 gal (207.9 L) Drum

Non-yellowing, 100% pure acrylic, low-VOC concrete sealer.

Diamond Clear 350

359DC 05 5 gal (18.9 L) Pail

359DC 55 55 gal (207.9 L) Drum

Non-yellowing, acrylic polymer blend for curing and sealing fresh concrete for use where regulations require VOC content \leq 350 g/L.

Diamond Clear VOX

359VV 05 5 gal (18.9 L) Pail

Non-yellowing, low odor, water-based acrylic polymer blend curing and sealing compound.

Super Diamond Clear

359A 05 5 gal (18.9 L) Pail

359A 55 55 gal (207.9 L) Drum

High solids, high gloss, non-yellowing, acrylic polymer blend for curing and sealing fresh or existing concrete.

Matte Add

CMAD P001 000 1 lb (0.45 kg) Can

CMAD P015 000 15 lb (6.8 kg) Pail

Colorless, finely-graded, polypropylene flattening additive for sealers and coatings, that provides a low-gloss finish on concrete surfaces.

Shur-Grip

CSHG P001 000 1 lb (0.45 kg) Can

CSHG P015 000 15 lb (6.8 kg) Pail

Colorless, finely graded polypropylene non-slip additive for sealers and coatings.

Ultra-Grip

CULG P001 000 1 lb (0.45 kg) Can

CULG P015 000 15 lb (6.8 kg) Pail

Colorless, finely graded, larger particle polypropylene non-slip additive for solvent-based sealers and coatings.

PENETRATING SEALERS

Chemstop WB Regular

TL1910501 6/1 gal (3.8 L) Units

TL1910505 5 gal (18.9 L) Pail

Water-based, breathable, silane/siloxane blend water repellent sealer for concrete and masonry.

DENSIFIERS, GUARDS & WAXES

Eucosil

053 05 5 gal (18.9 L) Pail

Water-based sodium silicate, which densifies and dustproofs concrete surfaces.

Euco Diamond Hard

059H 05 5 gal (18.9 L) Pail

Water-based blend of sodium silicate and silicate polymers which chemically react to provide an increase in surface density, durability, and abrasion resistance.

Ultraguard

059LS 05 5 gal (18.9 L) Pail

Water-based, polymeric, lithium silicate enhanced protectant that provides stain resistance and increases sheen on densified concrete.

High Gloss Wax

CHGW G001 000 1 gal (3.8 L) Can

CHGW G005 000 5 gal (18.9 L) Pail

Clear, durable, acrylic wax that leaves a beautiful high-gloss finish that when properly maintained resists surface abuse.

POLYMER FLOOR COATINGS

EPOXY

High Performance Epoxy Clear

CEPK G001 000 1 gal (3.8 L) Kit

CEPK G003 000 3 gal (13.6 L) Kit

CEPK G015 000 15 gal (68.2 L) Kit

Two-component, 100% solids, high-performance coating.

High Performance Epoxy (Pigmented)

CEPK O120 * 120 oz (3.5 L) Kit

CEPK O003 * 3 gal (13.6 L) Kit

Two-component, 100% solids, high-performance coating available in 35 standard colors.

* See Increte Standard Color Chart on pg. 27 for 3-digit color codes

URETHANE

Urethane

CUSK G034 000 3/4 gal (2.8 L) Kit

Non-yellowing two-component, solvent-based, polyester/aliphatic polyurethane protective floor coating.

Urethane Water-Based

CUWK G001 000 1 gal (3.8 L) Can

Non-yellowing two-component, water-based aliphatic urethane protective floor coating.

POLYASPARTIC

Polyseal HS

CPLK G002 000 2 gal (7.6 L) Kit

Two-part, high solids, clear polyaspartic coating.

COATING PRIMERS

Duraprime WB

TD2355099 0.81 gal (3.1 L) 2 Pack

TD2355999 4.75 gal (18.0 L) Pail

Two component, fast drying, penetrating, water based epoxy primer.

FLOOR COATING ADDITIVES AND ENHANCERS

Metal FX Powder

CMFX G001 * 1 gal (3.8 L) Dose

CMFX G003 * 3 gal (13.6 L) Dose

Metallic pigment for epoxy flooring system.

* See Metal FX Color Chart on pg. 28 for 3-digit color codes

Granite Coat Vinyl Chips

CVCB P020 * 20 lb (9.1 kg) Box

CVCB P055 * 55 lb (24.9 kg) Box

Blend of colored vinyl chips for epoxy flooring system.

* See Granite Coat Color Chart on pg. 28 for 3-digit color codes

Chroma-Quartz

CQUM P050 * 50 lb (22.7 kg) Bag

Pigmented crystalline quartz for resin flooring system.

* See Chroma-Quartz Color Chart on pg. 28 for 3-digit color codes

GemStone Elegance

CGSE P036 * 36 lb (16.3 kg) Box

Self-Leveling, seamless decorative epoxy flooring system.

* See GemStone Elegance Color Chart on pg. 28 for 3-digit color codes

PAVER PRODUCTS

Pro-Paver Sealer

CPSA G005 000 5 gal (18.9 L) Pail

CPSA G055 000 55 gal (207.9 L) Drum

Clear, non-yellowing solvent-based sealer for interlocking pavers.

Pro-Paver Polysand

CPSA P050 * 50 lb (22.7 kg) Bag

Blend of re-dispersible, finely graded, polymer-modified jointing sand.

* See Pro-Paver Polysand Color Chart on pg. 27 for 3-digit color codes

CLEANERS & STRIPPERS

Uni-Stripp

CUNS G001 000 1 gal (3.8 L) Can

CUNS G005 000 5 gal (18.9 L) Pail

Universal stripper for all paints and coatings.

Euco Clean & Strip

CPSA G005 000 5 gal (18.9 L) Pail

CPSA G055 000 55 gal (207.9 L) Drum

Heavy duty, concentrated, citrus-based cleaner and stripper to remove curing compounds, oils, grease, most concrete sealers, and other contaminants from concrete floors.

Euco R&E Cleaner

CJPC G001 000 1 gal (3.8 L) Can

CJPC G005 000 5 gal (18.9 L) Pail

Acidic concrete cleaner, rust remover, and metal primer.

Solv-Kleen

CSOL G001 000 1 gal (3.8 L) Can

CSOL G005 000 5 gal (18.9 L) Pail

Blended solvent clean-up and floor stripper product.

PLATFORM TOOLS
BRICK



SHRP S001
Herringbone Paver



SRUB S001
Running Bond Used Brick



SHBS S001
Herringbone Used Brick



SRUB S001

Running Bond Used Brick
54" x 18"

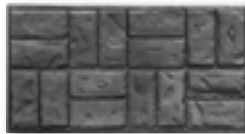
SRBT S001 Thinline



SHBS S001

Herringbone Used Brick
44" x 27"

SHBT S001 Thinline



SBBS S001

Basketweave Used Brick
32" x 16"

SBBT S001 Thinline



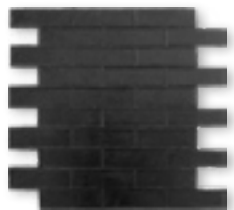
SRBP S001 S0

Running Bond Paver
51" x 15 1/2"



SRRP S001

Random Running
Bond Paver
51 1/4" x 14"



SCEB S001 S0

Crisp Edge Brick
28 1/8" x 26 1/8"



STSC S001 S0

Triple Soldier Course
Used Brick Thinline
33" x 24 5/8"



SREB S001 S0

Round Edge Brick
48" x 22 5/8"



SBWP S001

Basketweave Paver
32" x 16"



SHRP S001

Herringbone Paver
46" x 23"

PLATFORM TOOLS
SLATE



SOAT S001
Olde English Ashlar Slate



SRWS S001
Riverwalk Slate



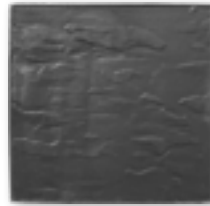
SASS S001

Ashlar Slate
24" x 24"



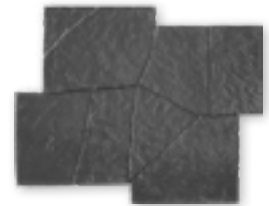
SRSS S001

Random Sidewalk Slate
30" x 30"



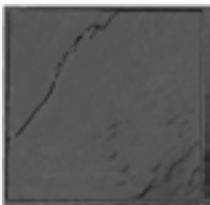
SPBS S001

Philly Bluestone
12" x 12" 24" x 18"
24" x 24" 36" x 24"



SRBS S001 S0

Random Belgian Slate
49 1/2" x 49 1/2"



SSTI S001

Slate Tile
24" x 24"



SNAS S001

Notched Ashlar
Slate
24" x 24"

SNAT S001 S0

Thinline



SRWS S001

Riverwalk Slate
24" x 24"

PLATFORM TOOLS

SLATE

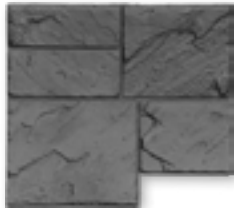


SOSQ S001
Olde English Slate Square



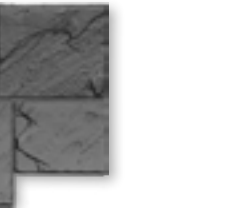
SOAT S001 | S0

Olde English Ashlar Slate Thinline
24" x 24"



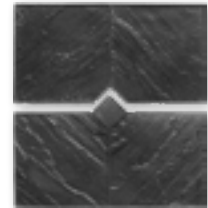
SNOT S001 | S0

Notched Olde English Ashlar Slate Thinline
24" x 24"



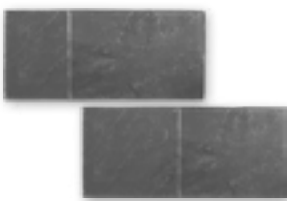
SLNO S001 | S0

(50% Larger Stones)
36" x 36"



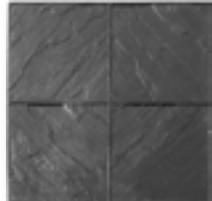
SOWD S001 | S0

Olde World Slate with Diamond Center
36" x 36" (Set of 2: 36" x 18")



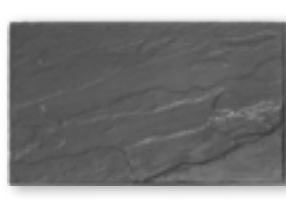
SOSS S001 | S0

Olde English Sidewalk Slate Set
18" x 36"



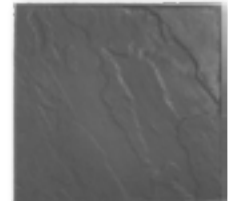
SOWS S001 | S0

Olde World 18" Slate Tile
36" x 36"



SOES S001 | S0

Olde English Slate
12" x 12" 12" x 18" 12" x 24"
18" x 24" 24" x 24" 24" x 30"



SOSQ S001 | S0

Olde English Slate Square
24" x 24"

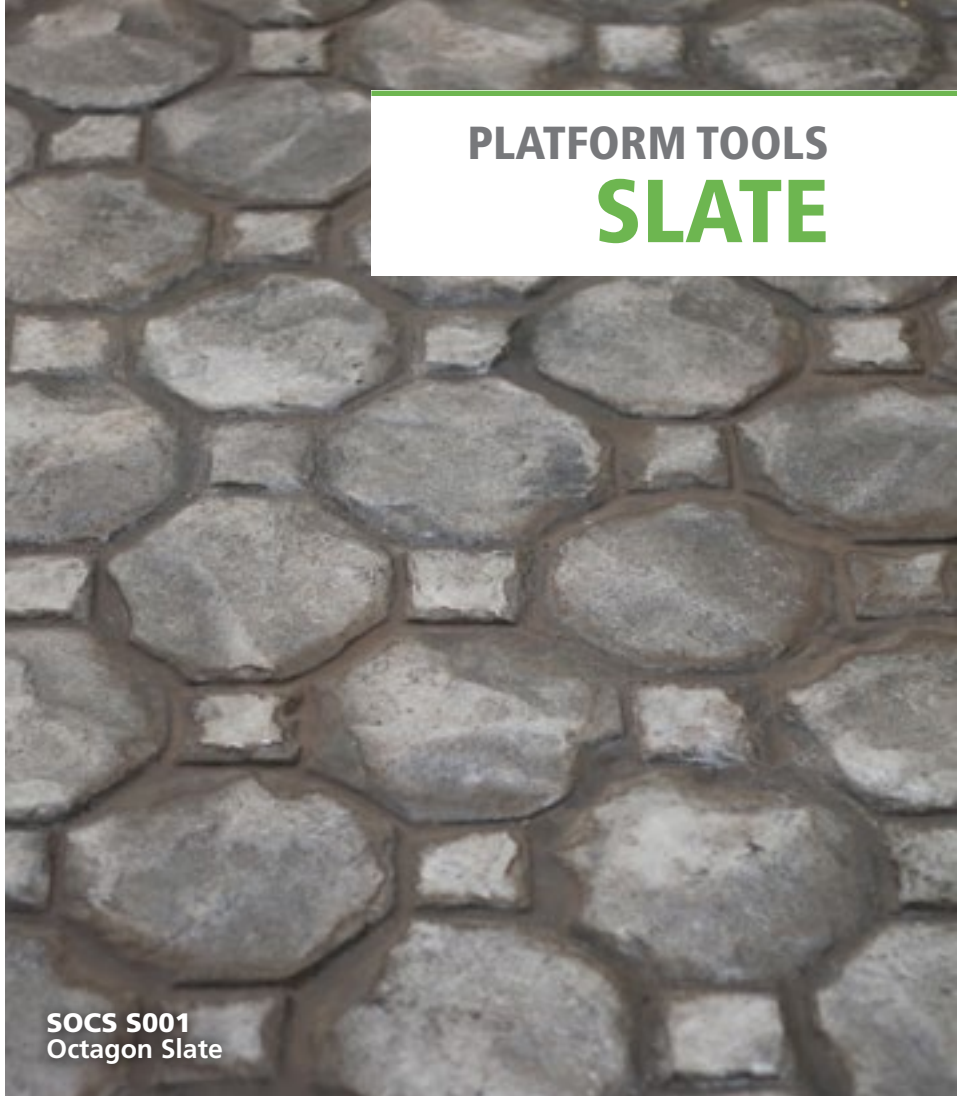
PLATFORM TOOLS
SLATE



SRSL S001
Random Slate Set



SWCA S001
Windsor Castle



SOCS S001
Octagon Slate



SHXF S001

18" Hexagon Slate
Sand Finish
36" x 36"



SHXS S001

Hexagon Slate
36" x 36"



SOCS S001

Octagon Slate
24" x 24"



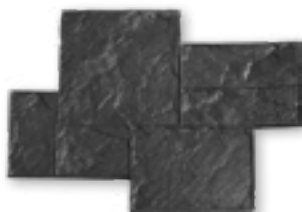
SOCQ S001

Octagon Square
42" x 22"



SWCA S001 SO

Windsor Castle Slate
11" x 11" 11" x 22" 11" x 33"
22" x 22" 22" x 33" 33" x 33"



SGSL S001 SO

Grand Slate
36" x 36"



SHSL S001 SO

Herringbone Slate
37" x 17"



SRSL S001

Random Slate Set
24" x 12 1/2" 25 1/2" x 12"
30" x 13 1/2"

PLATFORM TOOLS

GRANITE



SRGB S001
Running Bond Belgian Block



SLIG S001
Lisbon Granite



SRUC S001

Running Cobblestone Granite
44" x 21"



SBGW S001

Belgian Basketweave
36" x 18"



SLIG S001 S0

Lisbon Granite
33 1/4" x 25"



SRAC S001 S0

Radial Cobblestone Granite
67 1/2" x 21"
Specify 4' or 8' Diameter



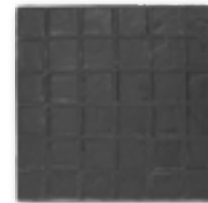
SECR S001

Euro Cobble Running Bond
58" x 20 5/8"



SBRC S001

Belgian Radial
43" x 24"



SSBG S001

Stacked Bond 4" Granite Tile
24" x 24"

SGT6 S001

Granite Tile 6" Square
24" x 24"

SGT8 S001

Granite Tile 8" Square
24" x 24"

PLATFORM TOOLS
GRANITE



SRGB S001
Running Bond Belgian Block



SOLM S001
Old London Mermaid Granite

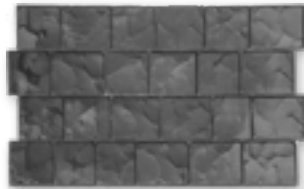


SBFS S001
Belgian Fan



SRGB S001

Running Bond Granite Brick
49" x 17 1/2"



SRGO S001 | S0

Running Bond Granite Block
44" x 23"



SOLM S001 | S0

Old London Mermaid Granite
43 1/2" x 25"



SPGR S001 | S0

Porto Granite
33 1/4" x 25"



SBFS S001 | S0

Belgian Fan
52" x 30"



SEGS S001

Euro Granite
50 7/8" x 27"



SRBB S001

Running Bond Belgian Block
38" x 25"



SATB S001

Atacama Border
55" x 18 1/2"

PLATFORM TOOLS

STONE



SROG S001
Rock Garden



SFRS S001
Flower Rock



SRFI S001

Random Fieldstone
29" x 29"



SRCR S001

Random Coquina
29 5/8" x 29 5/8"



SRFS S001

Random Flagstone
30" x 30"



SFRS S001

Flower Rock
26 1/2" x 26 1/2"

SFRT S001 S0

Thinline

SFTL S001

(50% Larger Stones)
38 1/2" x 38 1/2"



SSVS S001

Savanah Stone
24" x 24" 24" x 48"



SRRK S001

River Rock
25" x 52" 52" x 25"



SRST S001

River Stone
35" x 35"



SROG S001 S0

Rock Garden
35" x 35"



SEFS S001
Euro Fieldstone



PLATFORM TOOLS
STONE

SLRF S001
Large Random Flagstone



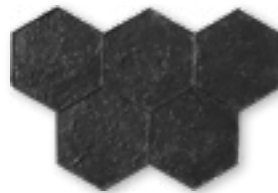
SLRF S001 | S0

Large Random Flagstone
26 3/4" x 26 3/4"
26 3/4" x 53 1/2"



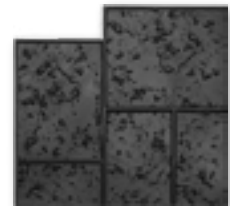
SEFS S001

Euro Fieldstone
40" x 18"



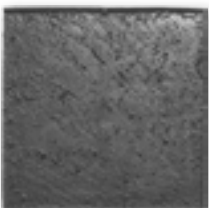
SHXK S001 | S0

Hexagon Keystone
33 1/2" x 23 3/4"



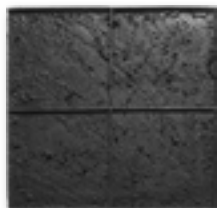
SNCT S001

Notched Coquina Thinline
24" x 24"



SKYS S001 | S0

Keystone
24" x 24"



SKSS S001 | S0

Keystone 12" Square
24" x 24"



SCCO S001

Castle Cobblestone
25 1/2" x 22"



STTR S001 | S0

Tumbled Travertine
47" x 27 3/4"

PLATFORM TOOLS

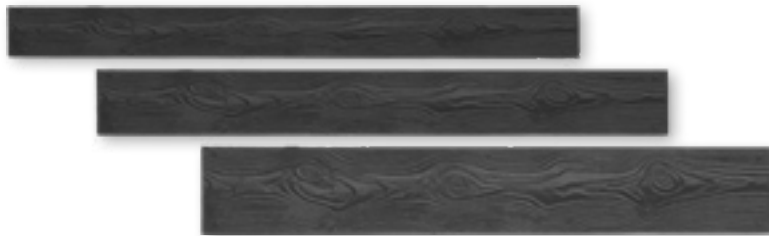
WOODPLANK



SWPL S001
11" Pegged Wood Plank



SWG6 S001
Ganged 8" Pegged Wood Plank



SWP6 S001 | S0

6" Pegged Wood Plank
6" x 24" 6" x 48"
6" x 72" 6" x 96"

SWP8 S001 | S0

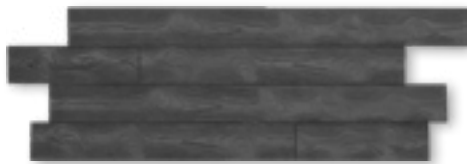
8" Pegged Wood Plank
8" x 24" 8" x 48"
8" x 72" 8" x 96"

SWPL S001 | S0

11" Pegged Wood Plank
11" x 24" 11" x 48"
11" x 72" 11" x 96"

SWGT S001

Wood Grain Tile
24" x 24"



SWG6 S001 | S0

Ganged 6" Pegged Wood Plank
24" x 83"



SWG8 S001 | S0

Ganged 8" Pegged Wood Plank
24" x 88"



SRO8 S001

8" Red Oak
8" x 24" 8" x 36" 8" x 48"
8" x 72" 8" x 96"



SRC4 S001

14" Rough Cut Plank
14" x 48" 14" x 72" 14" x 96"



Olde English Slate



Slate

SEAMLESS TEXTURE SKINS



Belgian Slate

SBS3 S001 S0

3' x 3'

SBS4 S001 S0

4' x 4'

SBS5 S001 S0

5' x 5'



Desert Slate

SDS3 S001 S0

3' x 3'

SDS4 S001 S0

4' x 4'

SDS5 S001 S0

5' x 5'



Slate

SSS3 S001 S0

3' x 3'

SSS4 S001 S0

4' x 4'

SSS5 S001 S0

5' x 5'



Olde English Slate

SOS3 S001 S0

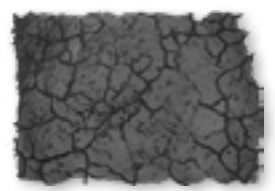
3' x 3'

SOS4 S001 S0

4' x 4'

SOS5 S001 S0

5' x 5'



Parched Soil

SPS3 S001 S0

3' x 3'

SPS4 S001 S0

4' x 4'



Tahoe Slate

STS3 S001 S0

3' x 3'

STS4 S001 S0

4' x 4'

STS5 S001 S0

5' x 5'



Coquina Slate

SCQ3 S001 S0

3' x 3'

SCQ4 S001 S0

4' x 4'

SCQ5 S001 S0

5' x 5'



Vestibule Slate

SVS3 S001 S0

3' x 3'

SVS4 S001 S0

4' x 4'

SVS5 S001 S0

5' x 5'



Aquatic Life

SAL3 S001 S0

3' x 3'

SAL4 S001 S0

4' x 4'

STAMPING ACCESSORIES

BORDER TOOLS



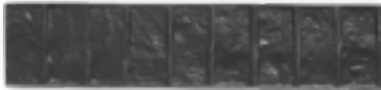
SSLB S001 S0

Slate Border
28 1/2" x 6 3/4"



SBRB S001 S0

Belgian Radius
13 1/4" x 8 3/4"



SBCL S001

12" Belgian Soldier Course
46" x 12"



SBCS S001

8" Belgian Soldier Course
37 3/4" x 8"



SCGB S001 S0

Cobblestone Square Granite
39 1/2" x 6 3/4"



SBSL S001

Belgian Stacked Bond
46" x 9" (large)



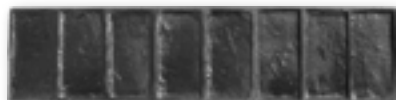
SBSB S001

Belgian Stacked Bond
37 1/2" x 4 1/2"



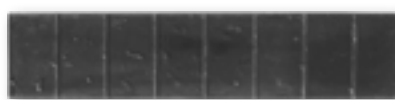
SECB S001 S0

Euro Cobblestone
45" x 11"



SSCS S001

Soldier Course Used Brick
33" x 9"



SSCT S001 S0

Soldier Course Used Brick Thinline
32 3/4" x 8 1/4"



SCBB S001 S0

Cobblestone
45" x 11"

STAMPING ACCESSORIES

EDGE FORMS



SSTR F002

Granite Edge
2 3/8" x 96"



SSTR F003

Granite Edge
4" x 96"

SSTR F004

Hammered Edge
2" x 96"



SSTR F005

Granite Edge
2" Inside Corner



SSTR F006

Granite Edge
2" Outside Corner



SSTR F007

Granite Edge
4" Inside Corner



SSTR F008

Granite Edge
4" Outside Corner

STAMPING ACCESSORIES TEXTURE WHEELS



Half Round

1/4" **TTWH T004**

3/8" **TTWH T006**

1/2" **TTWH T002**



V-Groove

1/4" **TTWH T005**

3/8" **TTWH T007**

1/2" **TTWH T003**



Hammered Edge

TTWH T008

Complete Set of 7

TTWH T001

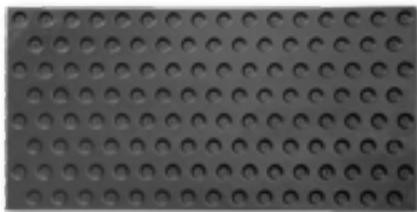
STAMPING ACCESSORIES STAIR RISER



SOER F001

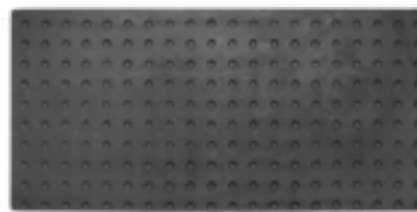
Stair Riser Rise: 6 1/2"
8" x 60" Tread: 1 1/2"

STAMPING ACCESSORIES DETECTABLE WARNING SYSTEMS



SBP4 S001

4' ADA Blind Path
24" x 48"



SWCH S001

4' ADA Wheelchair
24" x 48"

PLATFORM TOOLS VERTICAL



Wood Plank



Dry Stack



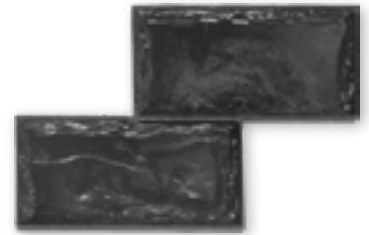
VCOB R001/R002

Edge Stone (A/B)
16" x 24"



VDRY R001/R002

Dry Stack (A/B)
16" x 24"



VSBL R001

Slate Block
15 1/2" x 23 1/2"



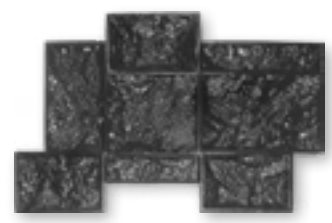
VSBR R001

Slate Brick
16 1/2" x 20 1/2"



VUSE R001

Used Brick
14 1/2" x 19"



VASH R001

Ashlar Stone
12" x 28"



VWOO R001

Wood Plank A
6" x 24"



VWOO R002

Wood Plank B
8" x 24"



VWOO R003

Wood Plank C
6" x 26"



Wall Stone

4" x 5"

9" x 11"

10" x 11 1/2"

10" x 12"

13" x 11"

13 1/2" x 16"

Complete Set

VWAL R001

VWAL R002

VWAL R003

VWAL R004

VWAL R005

VWAL R006

VWAL S001

URETHANE RUBBER FORMLINERS



Ashlar Cut Stone

WASH

Liner Size: 6' x 2'
Liner Thickness: 2 3/8"
Relief: 2"
Rock Sizes: 12" to 36"



Dry Stack

WDRY

Liner Size: 6' x 2'
Liner Thickness: 2 3/4"
Relief: 1 3/8"
Rock Sizes: 2" to 16"



San Luis Obispo

WSAN

Liner Size: 4' x 8'
Liner Thickness: 1 3/4"
Relief: 1 3/8"
Rock Sizes: 12" to 36"



Coquina

WCOQ

Liner Size: 6' x 2', 4' x 6'
Liner Thickness: 1 1/2"
Relief: 3/4"
Rock Sizes: 8" to 23"
Available in 3 sizes



Sedona

WSED

Liner Size: 6' x 2'
Liner Thickness: 2 3/8"
Relief: 2"
Rock Sizes: 4" to 35"



New Town Cobble

WNET

Set of 8 different liners
Liner Size: 5" to 32"
Liner Thickness: 1 3/4"
Rock Sizes: 5" to 32"



Cut Stone

W12C 12"

W18C 18"

W24C 24"



Hawaiian Coral

WHAW

Liner Size: 6' x 2'
Liner Thickness: 1 3/4"
Relief: 5/8"
Rock Sizes: 3" to 10"



Rustic Wood Plank

WWOO

Liner Size: 6' x 2'
Liner Thickness: 1"
Relief: 1/4"
Plank Sizes: 2' to 6'



Navajo

WNAV

Liner Size: 4' x 4', 4' x 8'
Liner Thickness: 2 3/4"
Relief: 1 3/4"
Rock Sizes: 6" to 21"



Salem Limestone

WLIM

Liner Size: 6' x 2'
Liner Thickness: 1 3/4"
Relief: 1/4"
Rock Sizes: 13" to 23"



River Rock

WRIV

Liner Size: 6' x 2'
Liner Thickness: 2 3/8"
Relief: 2"
Rock Sizes: 2" to 12"



Tennessee Foothills

WTEN

Liner Size: 4 1/2' x 12' 1"
Liner Thickness: 2 3/4"
Relief: 1 1/4"
Rock Sizes: 5" to 4'8"

COLOR SELECTIONS

NOTE: These printed color charts are for reference purposes. Euclid Chemical recommends choosing colors from actual test samples.

COLOR-CRETE

COLOR SELECTION FOR:

Color-Crete Granular

Color-Crete Powder

Color-Crete Liquid

* Colors available only in Color-Crete Powder and Color-Crete Liquid

				
Sandstone 730	Peco Beige 550	Fiesta 320	San Jose Buff 715	Austin Buff 047
				
Phoenix Tan 575	Sun Buff 725	Desert Tan 275	Autumn Brown 050	Cocoa 177
				
Yuma Gold 990	Sombra 805	Maplewood 460	Saltillo 705	Terra Cotta 875
				
Tile Red 895	Brick Red 100	Tahoe Red 850	Cherokee Red 153	Redwood 630
				
Navajo 510	Cordova 200	Sedona 750	Tierra 885	Pueblo 595
				
Soft Gray 802	Silver Gray 770	Euro Gray 285	Dark Gray 230	Charcoal 150
				
* Sun Buff 840 <i>Requires White Pigment</i>	* Pewter 560 <i>Requires White Pigment</i>	* Euro Slate 290 <i>Requires Green Pigment</i>	* Slate 785 <i>Requires Green Pigment</i>	* Philly Blue 570 <i>Requires Blue Pigment</i>

COLOR-CRETE 7/28

7 BASE COLORS - 28 HUES

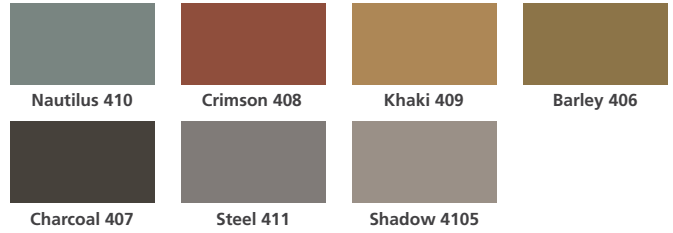
Also available in Chromium Green

Tan 860				
	1 Bag/2 Yards	1 Bag/1 Yard	2 Bags/1 Yard	4 Bags/1 Yard
Cayenne 130				
	1 Bag/2 Yards	1 Bag/1 Yard	2 Bags/1 Yard	4 Bags/1 Yard
Black Oxide 085				
	1 Bag/2 Yards	1 Bag/1 Yard	2 Bags/1 Yard	4 Bags/1 Yard
Natural Brown 505				
	1 Bag/2 Yards	1 Bag/1 Yard	2 Bags/1 Yard	4 Bags/1 Yard
Saddle (Yellow) 980				
	1 Bag/2 Yards	1 Bag/1 Yard	2 Bags/1 Yard	4 Bags/1 Yard
Red 605				
	1 Bag/2 Yards	1 Bag/1 Yard	2 Bags/1 Yard	4 Bags/1 Yard
Bark 120				
	1 Bag/2 Yards	1 Bag/1 Yard	2 Bags/1 Yard	4 Bags/1 Yard

COLOR-CRETE MORTAR COLORS



LEVEL TOP COLOR PACKS



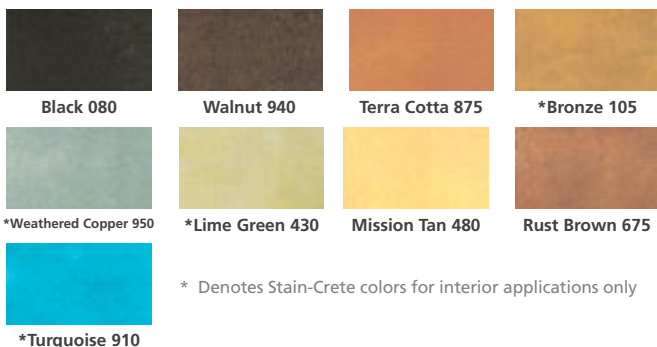
INCRETE STANDARD COLOR CHART

COLOR SELECTION FOR:

- Color Hardener
- Antiquing Agent
- Color Release
- Antique Release
- Concrete Stain Sealer Solvent-Based
- Concrete Stain Sealer Water-Based
- Concrete Stain Sealer VOC
- High Performance Epoxy
- Urethane Water-Based
- Increte Color Packs



STAIN-CRETE



* Denotes Stain-Crete colors for interior applications only

PRO-PAVER POLYSAND



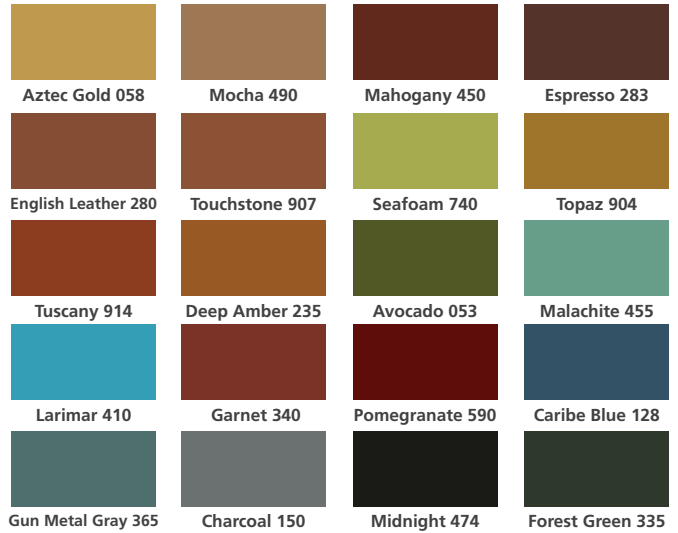
COLOR SELECTIONS

NOTE: These printed color charts are for reference purposes. Euclid Chemical recommends choosing colors from actual test samples.

STONE ESSENCE



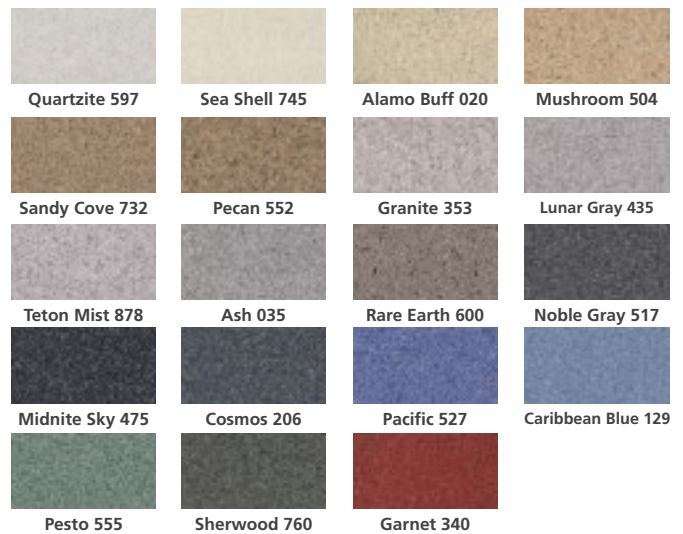
VIBRA-STAIN/VIBRA-STAIN SB



CHROMA-QUARTZ



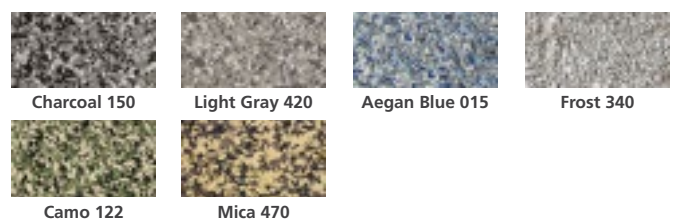
GEMSTONE ELEGANCE



METAL FX



GRANITE COAT



CUSTOM CAPABILITIES

STAMPING TOOLS & FORMLINERS

From company logos, texture and pattern duplication, to an entirely new design, Euclid Chemical's Custom Mold Shop staff can turn your tool or formliner ideas into a reality.

Experienced staff, the latest digital imaging and state-of-the-art facility can produce a tool or formliner for any project.



COLOR

Euclid Chemical's chemists and laboratory technicians provide expert custom color blending and matching services, using the latest technology to ensure exceptional color accuracy and consistency. Our color service laboratory works closely with contractors, designers, and architects to make sure the final color meets the project's technical specifications and aesthetic expectations.

TRAINING SEMINARS

Euclid Chemical's training seminars are two-day comprehensive programs that go beyond application techniques to include valuable instruction for project estimating, marketing, and sales strategies for business success.

The Decorative Concrete Seminar Provides:

- Application techniques working with the decorative industry's most diverse line of products and systems.
- Instruction with the latest product and system innovations.
- Strategies for year-round business success - in any market.
- Classroom instruction for efficient sales and accurate estimating.





EUCLID CHEMICAL

The Euclid Chemical Company

19215 Redwood Road • Cleveland, OH 44110 • 800-321-7628

1611 Gunn Highway • Odessa, FL 33556 • 800-752-4626

www.euclidchemical.com

