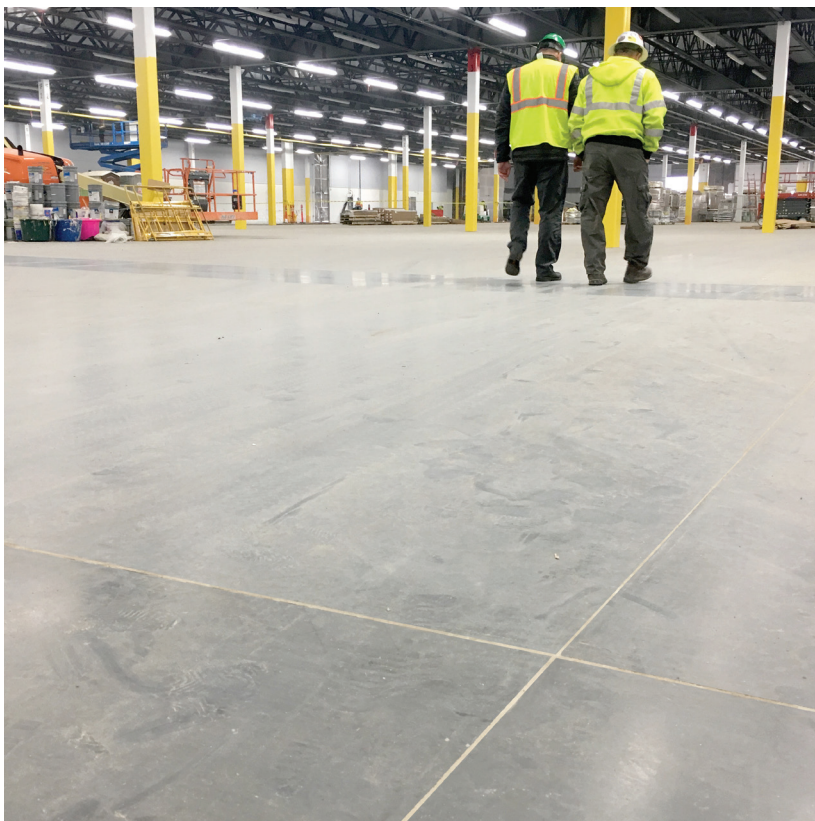




EUCLID CHEMICAL

PROJECT PROFILE

MEGA WAREHOUSE



PROJECT DATA

Location – Oregon

Application – Joint filling for industrial floor

General Contractor – Sierra Construction

Applicator – Sams & Sons

PRODUCTS FEATURED

EUCO 700

Semi-rigid industrial floor joint filler

EUCO QWIKjoint UVR

UV-resistant polyurea floor joint filler

EUCO CLEAN-CUT

Joint filler stain prevention film

SCOPE OF PROJECT

Application of joint filler for industrial floor
(slab-on-ground and slab-on-metal deck)



PROJECT SUMMARY

This Oregon warehouse will be used for order fulfillment from one of the world's largest online shopping companies and has over 850,000 ft² of slabs-on-ground and over 2.5 million ft² of mezzanine level (slab on metal deck). With a fast track construction schedule, Sams & Sons was able to use Euclid Chemical's joint filler products to successfully fulfill its responsibilities for this project. **Euco 700**, a two-component semi-rigid joint filler was used for filling the saw-cut control joints in the slabs-on-ground – approximately 115,000 linear feet of joints. Moreover, **Euco QWIKjoint UVR**, a polyurea joint filler, was used for filling the construction joints in the elevated slabs on deck.